

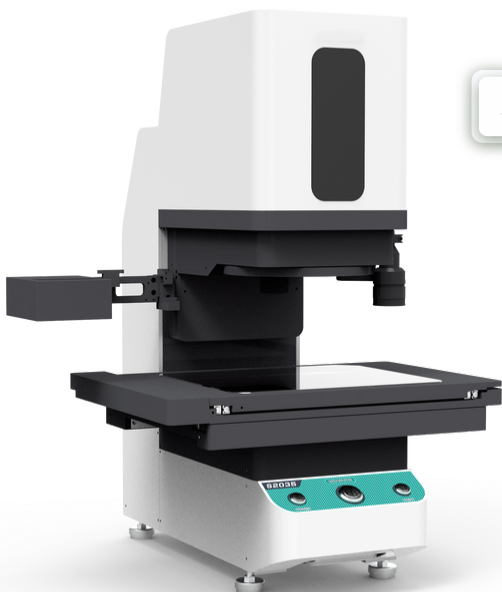
Industrial Smart One-Touch VMS

We are happy to introduce our Optike Industrial Smart One-Touch Video Measurement System and are proud to present it to you. This machine has a high level of accuracy and repeatability. The machine has a very easy user interface, using which each part's CTQ dimensions and tolerances can be setup once and used to inspect more than one part using One-Touch. Simply place parts on the work stage and click the button. It locates parts automatically placed anywhere within the system's fields of view and provides an output of parts that are okay and not okay. It also automatically records measurement results and creates detailed inspection reports for users. This user-friendly machine can be used by anyone to complete their work.

**S1010**

Industrial Smart One-Touch VMS – S1010

- Measurement Range: \varnothing 100 x 80mm
- Accuracy: upto $\pm 3\mu\text{m}^*$
- Repeatability: upto $\pm 1\mu\text{m}^*$
- Product Dimensions: 580 x 235 x 790 mm
- Movement Stroke: only Z Axis 75mm
- Glass Stage Size: 150 x 150mm
- Weight: 40KG
- Max Load capacity: 5kgs
- Measurement cycle time (seconds): <2seconds
- Measurement type: 2D

**S2035**

Industrial Smart One Touch VMS -S2035

- Measurement Range: 300x 200mm to 230 x 130mm
- Accuracy: upto $\pm 1\mu\text{m}^*$
- Repeatability: upto $\pm 0.5\mu\text{m}^*$
- Product Dimensions: 580 x 495 x 790 mm
- Movement Stroke: X axis-150mm, Y-100mm, Z-75mm
- Glass Stage Size: 318 x 268 mm
- Weight: 55KG
- Max Load capacity: 5kgs
- Measurement cycle time (seconds) : <2seconds
- Measurement type: 2D



S2015

Industrial Smart One-Touch VMS - S2015

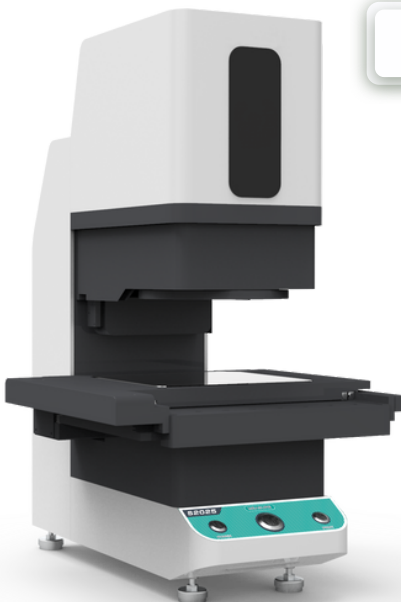
- Measurement Range: \varnothing 150 x 110mm to 50 x 35mm
- Accuracy: upto $\pm 2\mu\text{m}^*$
- Repeatability: upto $\pm 0.5\mu\text{m}^*$
- Product Dimensions: 650 x 335 x 885 mm
- Movement Stroke: X axis-120mm, Y-140mm, Z-75mm
- Glass Stage Size: 249 x 229mm
- Weight: 65KG
- Max Load capacity: 5kgs
- Measurement cycle time (seconds): <2seconds
- Measurement type: 2D



S4010

Industrial Full Automatic Flash Image Measuring Equipment - S4010

- Measurement Range: \varnothing 100x 80mm
- Accuracy: upto $\pm 3\mu\text{m}^*$
- Repeatability: upto $\pm 1\mu\text{m}^*$
- Product
- Dimensions: 790 x 230 x 385 mm
- Movement Stroke: Dual field
- Glass Stage Size: 150 x 150mm
- Weight: 27KG
- Max Load capacity: 3kgs
- Measurement cycle time (seconds) : <2seconds
- Measurement type: 2D



S2025

Industrial Smart One Touch VMS - S2025

- Measurement Range: 200x 200mm to 130 x 130mm
- Accuracy: upto $\pm 1\mu\text{m}^*$
- Repeatability: upto $\pm 0.5\mu\text{m}^*$
- Product Dimensions: 580 x 430 x 790 mm
- Movement Stroke: X axis-120mm, Y-140mm, Z-75mm
- Glass Stage Size: 249 x 229mm
- Weight: 55KG
- Max Load capacity: 5kgs
- Measurement cycle time (seconds) : <2seconds
- Measurement type: 2D



S2030

Industrial Smart One -Touch VMS - S2030

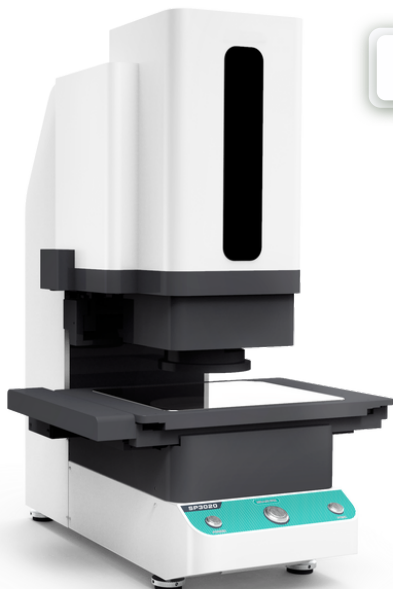
- Measurement Range: 300x 210mm to 200 x 135mm
- Accuracy: upto +/-2 μ m*
- Repeatability: upto +/-0.5 μ m*
- Product Dimensions: 675 x495x885 mm
- Movement Stroke: X axis-150mm, Y-100mm, Z-75mm
- Glass Stage Size: 318 x268mm
- Weight: 75KG
- Max Load capacity: 5kgs
- Measurement cycle time (seconds) : <2seconds
- Measurement type: 2D



S6045

Industrial 2D+3D Flash Measuring Equipment - S6045

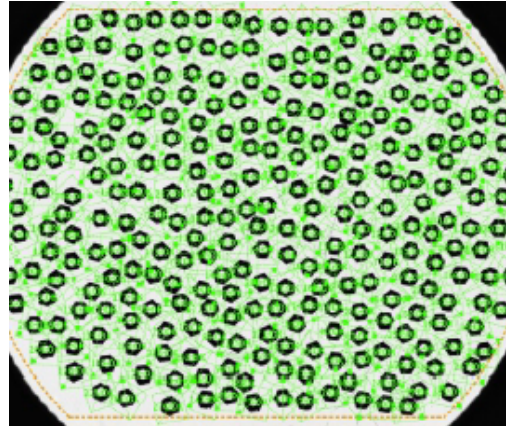
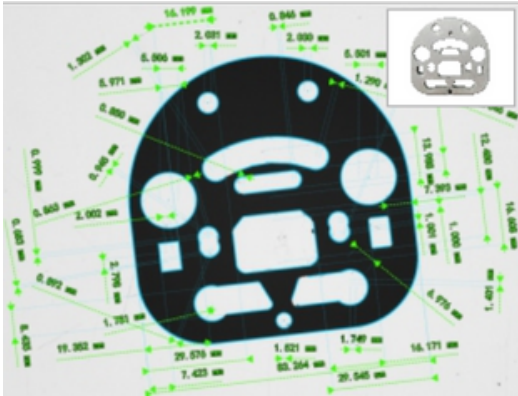
- Measurement 500x 400mm to 430 x 350mm
- Accuracy: upto +/-1 μ m*
- Repeatability: upto +/-0.5 μ m*
- Product Dimensions: 1060 x 860 x 1890 mm
- Movement Stroke: X axis -150mm, Y-100mm, Z-75mm
- Glass Stage Size: 318 x 268 mm
- Weight: 650 KG
- Max Load capacity: 25kgs
- Measurement cycle time (seconds) : <2seconds
- Measurement type: 2D



SP3020

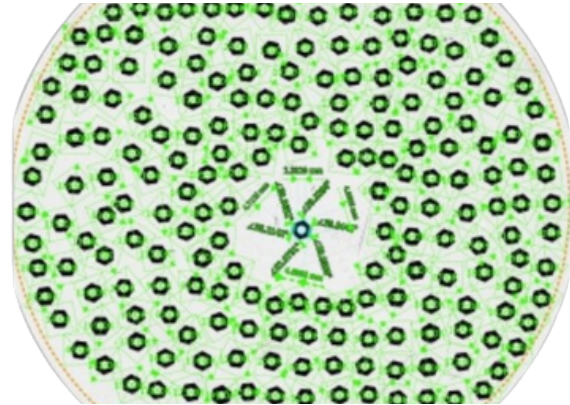
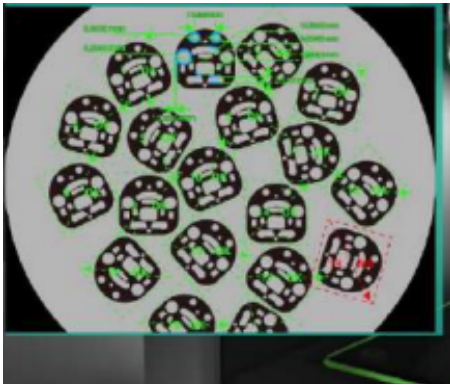
Industrial Smart One Touch VMS - SP3020




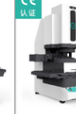




- Measurement 194x 135mm to 162 x 108mm
- Accuracy: upto +/-0.7 μ m*
- Repeatability: upto +/-0.25 μ m*
- Product Dimensions: 670 x500x855 mm
- Movement Stroke: X axis -150mm, Y-100mm, Z-75mm
- Glass Stage Size: 318 x 268 mm
- Weight: 75KG
- Max Load capacity: 5kgs
- Measurement cycle time (seconds) : <2seconds
- Measurement type: 2D



999+ position can be measured at a time

200+ work pieces can be measured at a time



Product model										
Measurement range (mm)	Wide field	φ100x80	φ150x110	200x200	300x210	300x200	194x135	500x400	φ100×80	
	Small field	/	50x35	130x130	200x135	230x130	162x108	430×350	/	
Measurement accuracy (μm)	No ⁺ Splicing	Wide field	±3 ^①	±5 ^②	±3 ^①	±5 ^②	±3 ^①	±2 ^③	±3 ^①	
		Small field	/	±2 ^③	±1 ^④	±2 ^③	±1 ^④	±0.7 ^⑤	/	
	With ⁺ Splicing	Wide field	/	/	±(5+0.02L) ^⑥	±(7+0.02L) ^⑦	±(5+0.02L) ^⑧	±(4+0.02L) ^⑨	±(5+0.02L) ^⑩	
		Small field	/	/	±(3+0.02L) ^⑥	±(4+0.02L) ^⑦	±(3+0.02L) ^⑧	±(2.7+0.02L) ^⑨	±(3+0.02L) ^⑩	
Repetition accuracy (μm)	No Splicing	Wide field	±1	±1	±1	±1	±1	±1	±1	
		Small field	/	±0.5	±0.5	±0.5	±0.5	±0.5	/	
	With Splicing	Wide field	/	/	±2	±2	±2	±2	/	
Small field	/	/	±1.5	±1.5	±1.5	±1.25	±1.5	/		
Product dimension (mm)		580x235x790	650x335x885	580x430x790	675x495x885	580x495x790	670x500x855	1060x860x1890	790×230×385	
Optical lens	Single-field dual-telecentric lens	Dual-field dual-telecentric, low distortion lens				Dual-field dual-telecentric, low distortion lens+FA lens		Dual-field dual-telecentric lens		Single magnification dual-telecentric lens
Weight of platform (kg)	Approx.40	Approx.65	Approx.55	Approx.75	Approx.55	Approx.75	Approx.650		Approx.27	
Load-Bearing(KG)	5									
Load-Bearing(KG)	25									
Load-Bearing(KG)	3									
Illumination system	Transmission light: Telecentric Parallel Illumination (Green light) Surface light: 4-zone medium and low angle ring lighting (White light) Surface light: Ring (low angle) illumination (green light) Coaxial light (optional): Epi-illumination (white light)				Transmission light: Telecentric Parallel Illumination (Green light) Surface light: 4-zone medium and low angle ring lighting (White light) Surface light: Ring (low angle) illumination (green light) Coaxial light: Epi-illumination (white light)		Transmission light: Telecentric Parallel Illumination (Green Light) Surface light: High angle lighting (white light) Surface light: 4-zone medium and low angle ring lighting (White light) Surface light: Ring (low angle) illumination (green light) Coaxial light (optional): Epi-illumination (white light)		Telecentric parallel light source (green light)	
Measurement data	2D measurement									
Output data	With the function of report output and statistics									
Placement of work piece	Allow free placement of single or multiple work pieces, and realize one-key measurement								one-key measurement	
Power requirement	220V-, 50Hz, 600W						220V-, 50Hz, 1400W		220V-, 50Hz, 600W	
Environmental requirement	Temperature: 20°C±2°C, relative humidity: 30%-80%, vibration: <0.002g, less than 15Hz									

Remark]
 ① Based on focal position and environment temp. at +20±1°C
 ② Based on focal position, environment temp. at +20±1°C and coordinate platform less than 2kg. L refers to the amount of movement (mm) of coordinate platform
 ③ Within φ80×64mm
 ④ Within 16×13mm
 ⑤ Within φ120×88mm
 ⑥ Within 180×180mm
 ⑦ Within φ40×28mm
 ⑧ Within 117×117mm
 ⑨ Within 270×189mm (4 corners R60)
 ⑩ Within 180×121mm
 ⑪ Within 270×180mm
 ⑫ Within 207×117mm
 ⑬ Within 35×28mm
 ⑭ Within 10×6mm
 ⑮ Within 174×121mm
 ⑯ Within 180×121mm
 ⑰ Within 35×28mm
 ⑱ Within 10×6mm
 ⑲ Within 146×97mm
 ⑳ Within 73×49mm
 ㉑ Within 16×12mm
 ㉒ Within 450×360mm
 ㉓ Within 387×315mm
 Optional: pedal, coaxial light, CAD import function, Data transmission software MES transfer function, Automated remote control function
 Optional: Chromatic confocal sensor, suitable model (S2035, S6050)