

# India's No.1 Industrial Visual Inspection System

**Designed to  
work  
24X7X365\***

**Excellent Price  
to Performance  
& Fastest ROI**

**Robust &  
Reliable**  
Industrial Build Quality

**High  
Magnification  
Range**  
**22X to 185X**

**Better Process  
Control &  
Visibility**



## Measure during visual inspection – without a PC

With Industrial VIS, you can measure various features directly in the live image and save the results alongside the image for documentation purposes.  
(Measurement option is only selected model)\*

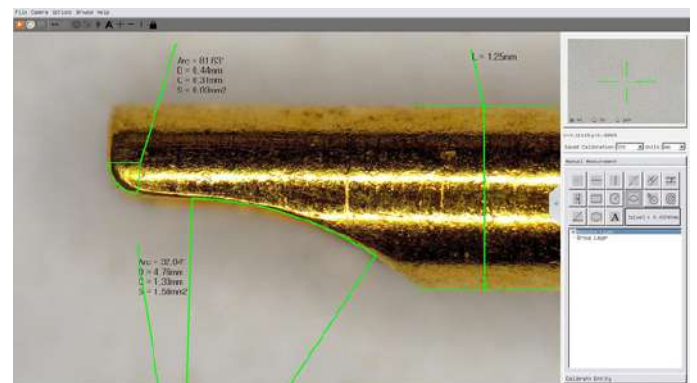


## Just use it - designed for everyone

The Industrial VIS platform is crafted to enable users of all skill levels to intuitively begin using it. Even those with little experience can efficiently operate the system with minimal training, saving both time and effort.

## Work with a single system

Our Industrial VIS combines visual inspection, high-resolution observation, and 2D non-contact measurement tools into one seamless solution. Engineered for precision and ease of use, this all-in-one system allows users to inspect components, capture images, and perform accurate dimensional measurements—without the need for multiple devices or software.



## Identify defects more clearly

- Attain vibrant, high-contrast live images with the use of high dynamic range (HDR) live imaging.
- Utilize proprietary software designed to minimize reflections in images.



## India's No.1 Industrial Visual Inspection System

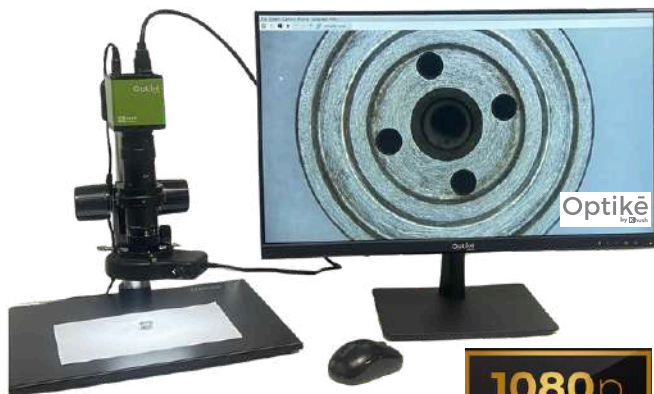
Optikē's Industrial Visual Inspection System offers a high-precision, non-contact solution designed for the fast and accurate inspection of manufactured components. With 1080p Full HD/4K Ultra HD resolution, advanced zoom optics, and adjustable LED lighting, it delivers sharp, clear visuals that aid in identifying defects such as burrs, cracks, and dimensional variations. Tailored for industries like electronics, automotive, medical, and tooling, this system streamlines quality control by reducing inspection time and enabling detailed image analysis. Its intelligent software ensures consistent, repeatable results, enhancing productivity and maintaining high standards of quality assurance in demanding production environments.

### 1. 1080HD Resolution - Economy Version

- High Resolution HDMI Industrial Camera 1/2" Sony CMOS Sensor, Real time 60fps, Metal Body, 1920x1080 resolution for Very Sharp Images.
- Proprietary Image Processing Algorithm & Software Image Enhancement to reduce reflection & High Dynamic Range HDR.
- Parfocal Industrial Imaging Zoom Lens - FOV 22mm to 3mm & Clear Working Distance 80mm, Magnification 22x to 185x\*.
- Special LED Ring Light with Dimmer Control. (Clear / Diffused).
- Heavy Duty Table Top Stand with Lead Screw Focus Adjustment.
- Native Full HD Resolution 24" HDMI Display (Included).



### 2. 1080HD Resolution - Premium Version

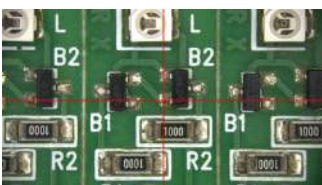


22X



110X

Cross Hair & Grid Line



185X



- All features of Economy Version & Extra Below.
- Mouse Control with Cross Hair & Customisable XY Lines Option - Edit Color / Thickness etc.
- Pen Drive Slot for Capturing Photos
- Capture in JPEG format under 250kb without loss of resolution.
- Higher Dynamic Range Control with Custom HDR Adjustment.
- Real-Time Exposure Setting for Dynamic Correction.
- Better Image Software Enhancement for a Sharper Image.
- Image Pause Function & B&W Conversion Function.
- Future Software Upgradeable using Pen Drive.
- Wireless Mouse, 16GB Pen Drive (Included).

#### Specification (Same for Both Models)

Parameters	1X Standard Setup	0.5 Aux Lens (Optional)
Magnification	22X to 185X	11X to 93X
Field of View	22mm to 3mm	44mm to 6mm
Working Distance	80mm	160mm



## 3. 1080HD Resolution - Large FOV



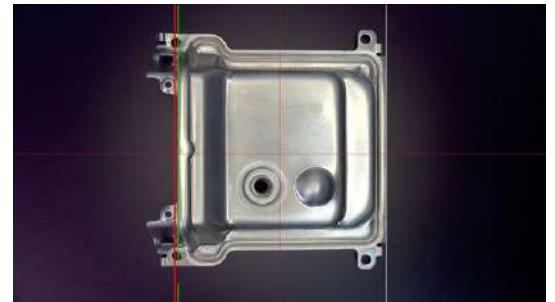
- Color Temperature Control**  
 Large 200mm Ø SMD LED Diffused Ring Light with Dimmer & 3 Step Colour Temp Control.
- Cross Hair & Grid Line**  
 To aligning, spacing, centering and precisely placing key design elements.
- Large Field of View**  
 A field of view (FOV) of 260mm at a working distance of 200mm offers a broad perspective.
- High Magnification Range**  
 Provides magnification range from 2X to 22X with advance optical zoom depending on working distance.

- High performance camera**  
 Full HD 1080p Resolution camera for better clarity
- Motorized zoom**  
 Motorized zoom for better control on magnification.
- Auto Focus**  
 Integrated Industrial Imaging Lens with Auto Focus Function & Motorized Optical Magnification.

### Cross Hair & Grid Line



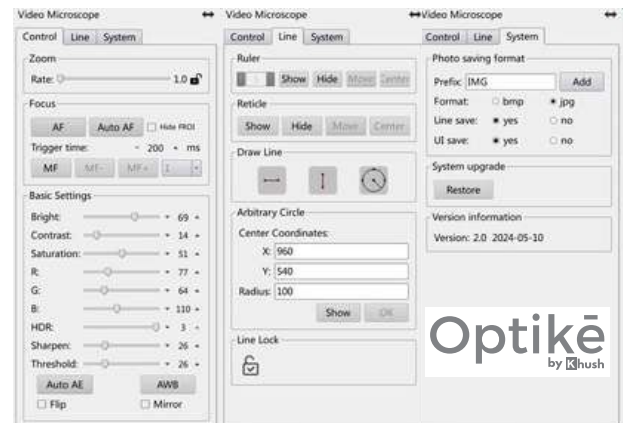
### Reference Lines



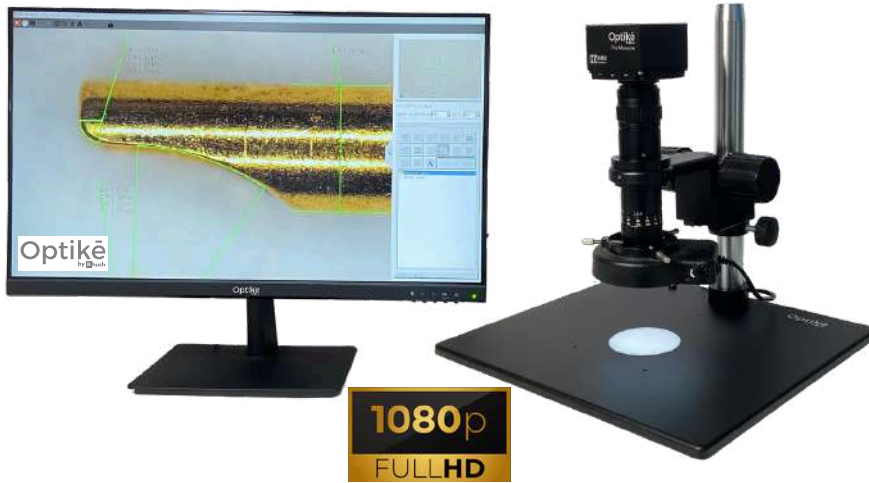
### Specification

On-Screen Magnification	FOV-Horizontal	Working Distance
3.5X - 22X	150mm-27mm	100mm
2.5X - 16X	210mm-33mm	150mm
2X - 14X	260mm-38mm	200mm

### Software



## 4. 1080HD Resolution - Pro 2D Measurement Version



The Optikē Pro Measurement Version combines high-resolution visual inspection with powerful basic VMS capabilities for accurate 2D non-contact measurements. Featuring tools like auto calibration, edge detection, and customizable measurement overlays, it ensures fast, precise analysis and documentation—all within a single, easy-to-use system designed for quality control and inspection.

### Specification

Parameters	1X Standard Setup	0.5 Aux Lens (Optional)
Magnification	22X to 185X	11X to 93X
Field of View	19mm to 3mm	38mm to 6mm
Working Distance	80mm	160mm

### High performance camera

Full HD 1080p Resolution camera for better clarity

### 2D Measurement

Access a 2D non-contact measurement option with accuracy of  $\pm 10 \mu\text{m}$  & repeatability of  $\pm 5 \mu\text{m}$ .

### Custom HDR

Higher Dynamic Range Control with Custom HDR Adjustment.

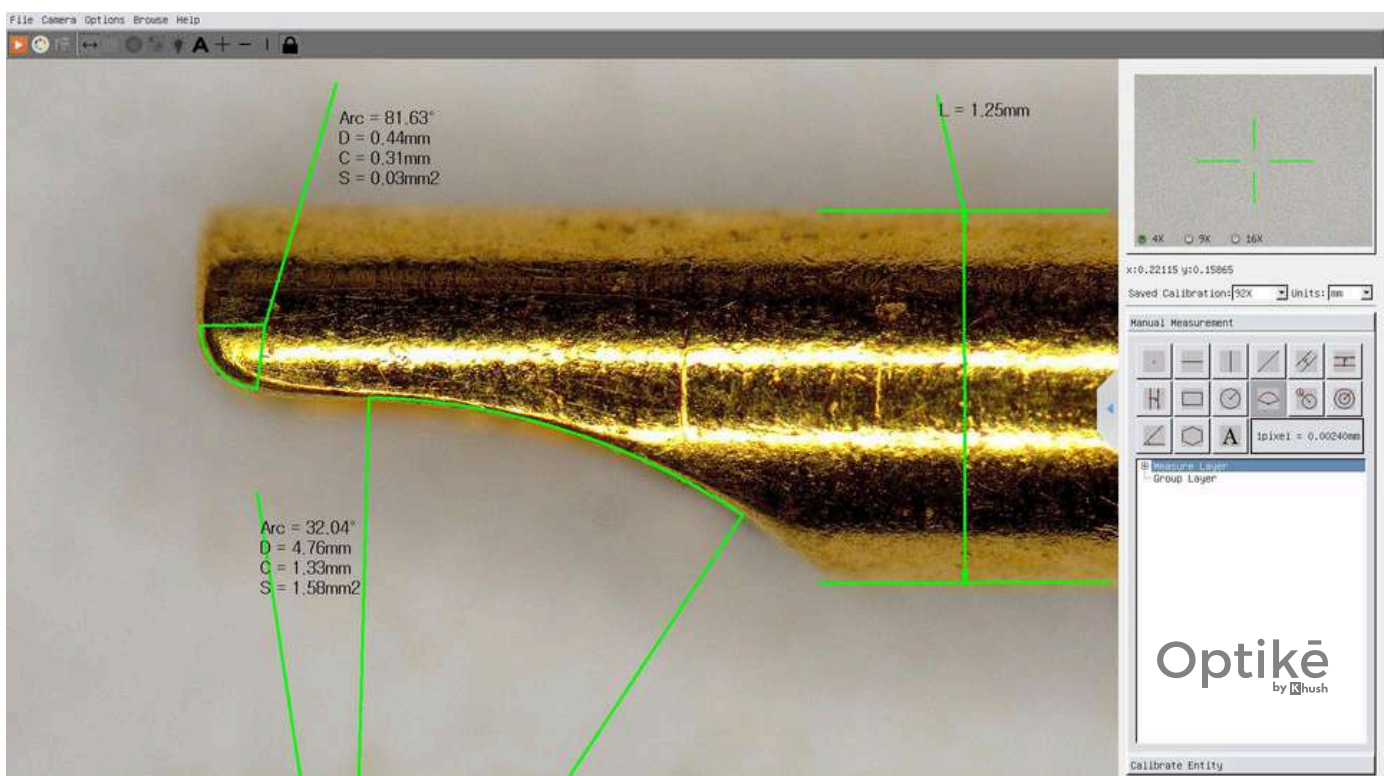
### Photo Capture Option

Photo capture with measurement overlay enables visual documentation.

### Unique Features for Measurement

- Auto Calibration • Saved Calibration Recall
- Edge Detection • Auto Point Selection
- Correction • Customisable On-Screen Reticle • Multiple 2D Measurement Tools
- Customisable XY Lines

**Accuracy  $\pm 10 \mu\text{m}^*$**   
**Repeatability  $\pm 5 \mu\text{m}^*$**





## 5. Pro-Measure All in One



- HDR**

Enhance color and contrast with HDR technology.



- 2D Measurement**

Access a 2D non-contact measurement option with accuracy of  $\pm 10 \mu\text{m}$  and repeatability of  $\pm 5 \mu\text{m}$ .

- Parafocal Adjustment**

Enjoy parafocal adjustment that eliminates the need for refocusing during zoom changes.

- High Magnification Range**

Provides magnification range from 20X to 168X with advance optical zoom.

- Integrated LED Ring light with automatic brightness control.**

**Accuracy  $\pm 10 \mu\text{m}^*$   
Repeatability  $\pm 5 \mu\text{m}^*$**

### Specification

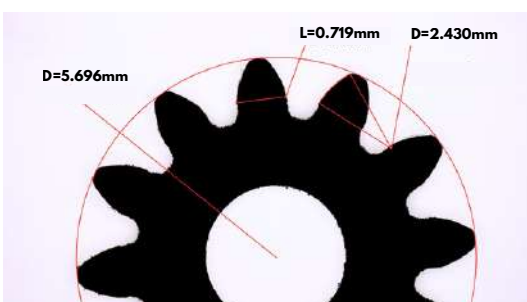
Parameters	1X Standard Setup	0.5 Aux Lens (Optional)
Magnification	20X to 168X	10X to 84mm
Field of View	24mm to 3mm	48mm to 6mm
Working Distance	60mm	120mm

**Optikē**  
by Khush

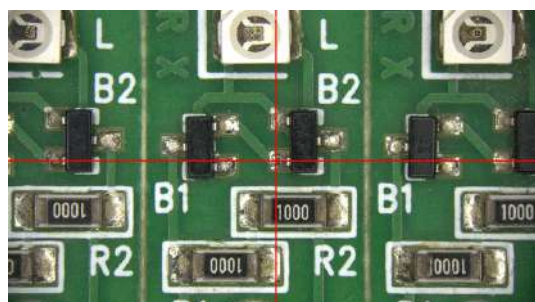
### Software (Included)



### 2D Measurement



### Cross Hair & Grid Line



- High performance camera**

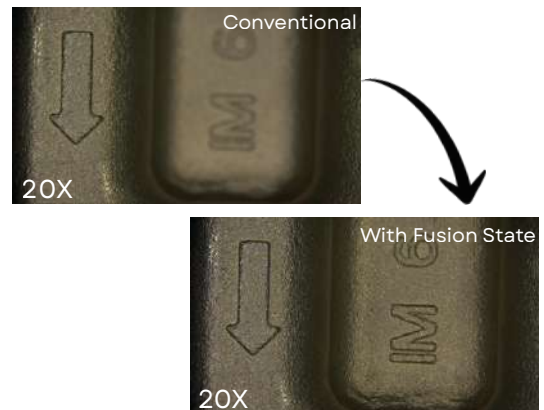
Full HD 1080p Resolution camera for better clarity.

- Motorized zoom**

Motorized zoom for better control on magnification.

- Fusion State**

Improve overall image clarity through fusion state by merging multiple focal planes.

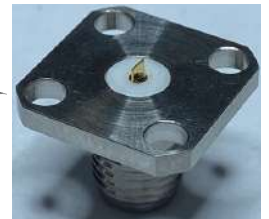


## 6. Auto-Measure

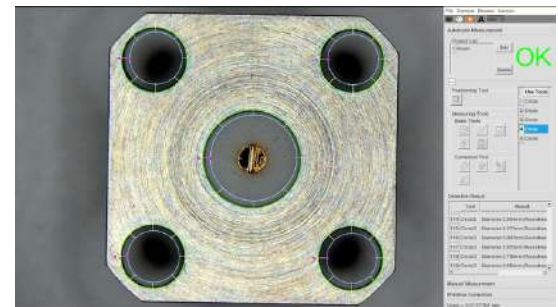


- **High performance camera**  
Full HD 1080p Resolution camera for better clarity
- **2D Auto Measurement**  
Automate the inspection process for mass production focusing on straightforward 2D dimensions.
- **HDR**  
Enhance color and contrast with HDR technology.

- **2D Measurement**  
Access a 2D non-contact measurement option with accuracy of  $\pm 10 \mu\text{m}$  and repeatability of  $\pm 5 \mu\text{m}$ .
- **Parafocal Adjustment**  
Enjoy parafocal adjustment that eliminates the need for refocusing during zoom changes.
- **High Magnification Range**  
Provides magnification range from 22X to 185X with advance optical zoom.
- **Integrated LED Ring light with automatic brightness control.**



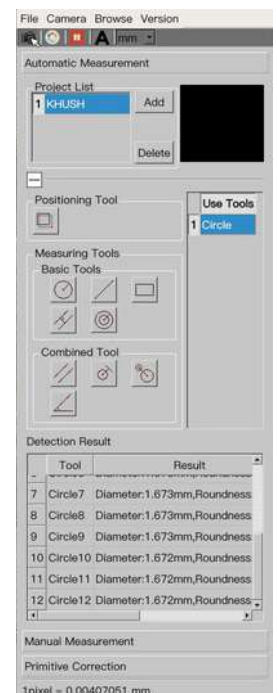
Auto Measurement



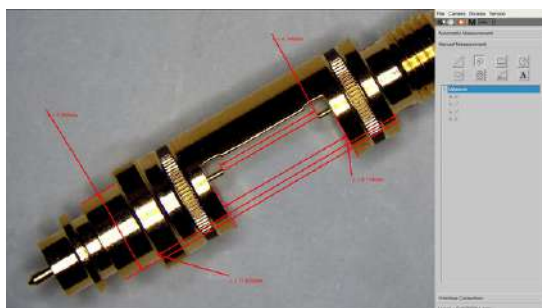
### Specification

Parameters	1X Standard Setup	0.5 Aux Lens (Optional)
Magnification	22X to 185X	11X to 93X
Field of View	22mm to 3mm	44mm to 6mm
Working Distance	80mm	160mm

### Software (Included)



### 2D Manual Measurement



### Foot Pedal & OK/NG Indicator

The foot pedal is used to operate the program, while the indicator displays whether the part is acceptable (OK) or (NG).



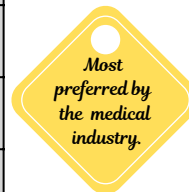
## 7. 4K Ultra HD Resolution - With 2D Measurement Version



The 4K Ultra HD Resolution – With 2D Measurement Version delivers outstanding image clarity and precision, making it perfect for high-accuracy visual inspections and dimensional analyses. Offering four times the detail of standard HD, it allows users to see fine features and subtle defects clearly across the full field of view.

### Specification

Parameters	1X Standard Setup	0.5 Aux Lens (Optional)
Magnification	<b>22X to 185X</b> (Calculated for 24" Monitor)	<b>11X to 93X</b> (Calculated for 24" Monitor)
Field of View	<b>24mm to 3mm</b>	<b>48mm to 6mm</b>
Working Distance	<b>80mm</b>	<b>160mm</b>



### High performance 4K camera

Ultra HD 4K delivers high clarity, revealing minute defects & fine details with exceptional sharpness, contrast & color accuracy.

### 2D Measurement

Access a 2D non-contact measurement option with accuracy of  $\pm 10 \mu\text{m}$  & repeatability of  $\pm 5 \mu\text{m}$ .

### HDR10

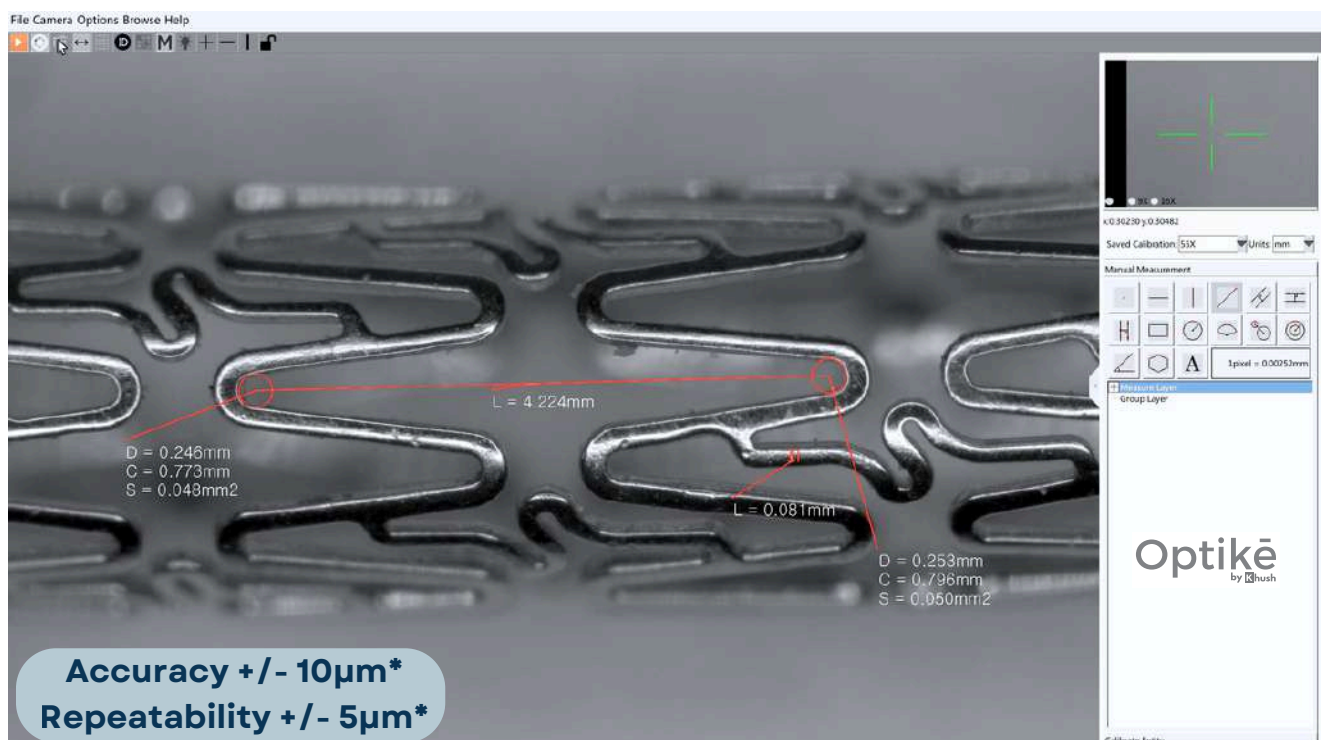
Our 4K system includes a stunning 27" 4K monitor with HDR10 support, delivering ultra-sharp visuals, rich colors, and enhanced contrast. It ensures accurate inspection by revealing even the subtlest details in both bright and dark areas—ideal for precision-critical applications.

### Comparison with 1080p

4K has four times the resolution of 1080p, offering crisper images, better zoom-in capabilities, and superior detail detection, which is crucial in precision inspection like medical applications.

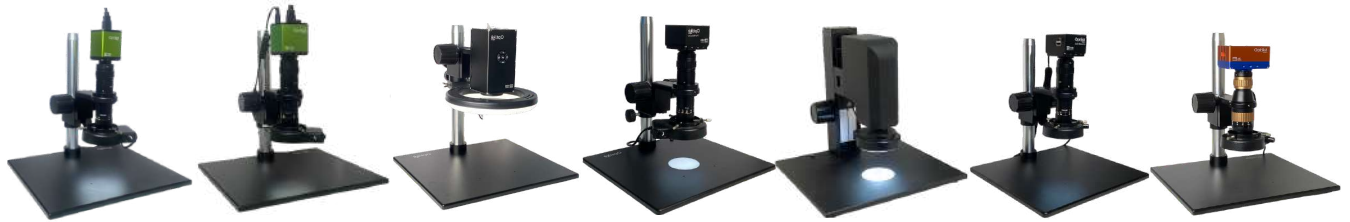
### Photo Capture Option

Photo capture with measurement overlay enables visual documentation.



**Angioplasty Stent having wall thickness of 80 $\mu\text{m}$  @ 110x Magnification**

## Technical Details for All Versions



Specification	Economy Version	Premium Version	Large FOV	Pro-Measure Version	Pro-Measure All in one	Auto Measure	4K Version
Magnification Range	22X to 185X	22X to 185X	2X to 22X	22X to 185X	22X to 168X	22X to 185X	22X to 185X
Working Distance	80mm	80mm	100mm to ∞	80mm	60mm	80mm	80mm
Resolution	1080p	1080p	1080p	1080p	1080p	1080p	4K Ultra HD
Field of View	22mm to 3mm	22mm to 3mm	260mm to 27mm	19mm to 3mm	24mm to 3mm	22mm to 3mm	24mm to 3mm
Camera Output	HDMI	HDMI	HDMI	HDMI	HDMI	HDMI	HDMI
Measurement	Not-Available	Not-Available	Not-Available	Available	Available	Available	Available
Accuracy	-	-	-	Accuracy ±10µm Repeatability ±5µm	Accuracy ±10µm Repeatability ±5µm	Accuracy ±10µm Repeatability ±5µm	Accuracy ±10µm Repeatability ±5µm
Display	24"	24"	24"	24"	24"	24"	27"
Illumination	Diffused LED Ring Light	Diffused LED Ring Light	LED Ring Light 200mm Dia.with Color Temp Control	Diffused LED Ring Light	Diffused LED Ring Light	Diffused LED Ring Light	Diffused LED Ring Light

## A few of the Optional Accessories :



**Aux Objective Lenses**



**Dome Lights**



**Fiber Optic Cables**



**XY Stage**



**All Types of Ring Lights**



**Calibration Masters**



**Co-Axial Point Light**



**Dual Gooseneck LED Lights**



## Additional Features

Models Features	Economy Version	Premium Version	Large FOV	Pro-Measure Version	Pro- Measure All in one	Auto Measure	4K Version
Cross Hair	✓	✓	✓	✓	✓	-	✓
X-Y Lines	✓	✓	✓	✓	✓	-	✓
HDR	✓	✓	✓	✓	✓	✓	✓
Custom (HDR)	-	✓	-	✓	✓	-	✓
Photo Capture	-	✓	✓	✓	✓	✓	✓
Black & white	-	✓	✓	✓	✓	✓	✓
Future Software Update	-	✓	✓	✓	✓	✓	✓
Image Pause	-	✓	✓	✓	✓	✓	✓
Real Time Exposure	-	✓	✓	✓	✓	-	✓
Mirror & Invert Image	-	✓	✓	✓	-	✓	✓
Auto Focus	-	-	✓	-	-	-	-
Ruler	-	-	✓	✓	-	-	✓
Zoom Lock	-	-	✓	-	-	-	-
Measurement	-	-	-	✓	✓	✓	✓
Auto Edge Didection	-	-	-	✓	✓	✓	✓
Fusion State	-	-	-	-	✓	-	-
Zoom Loop	-	-	-	-	✓	-	-
Auto Brightness Control	-	-	✓	-	✓	-	-
On Screen Magnification	-	-	-	-	✓	-	-
Automatic Measurement	-	-	-	-	-	✓	-
Numbering Option	-	-	-	✓	-	-	✓

## Existing Users of Optike Industrial VIS : 1000+ Satisfied Users till date\*



## Few Examples of Parts / Components :



Turned CNC  
Machining Parts



Horological Parts



PCBA Inspection



Metal Moulding



Rubber Components



Cutting Insert Tools



Metal Stamping Tools



Medical Parts